

Membranolytic Effects of an Anticancer Peptide Investigated by Atomic Force Microscopy

Luciano Paulino Silva

Laboratory of Nanobiotechnology (LNANO), Embrapa Genetic Resources and Biotechnology – Cenargen, Brasília, Brazil

Corresponding author: Luciano Paulino Silva, Laboratory of Nanobiotechnology (LNANO), Embrapa Genetic Resources and Biotechnology – Cenargen, Brasília, Brazil, Tel: (61) 3448-4433; E-mail: luciano.paulino@embrapa.br; lucianopaulinosilva@gmail.com

Received: 04 June 2016; **Accepted:** 06 June 2016; **Published:** 08 June 2016

Citation: Silva LP. Atomic Force Microscopy Top-view Images of the Topographical Surface of Control HeLa Cells. Arch Can Res. 2016, 4: 2.

Microscopic Image

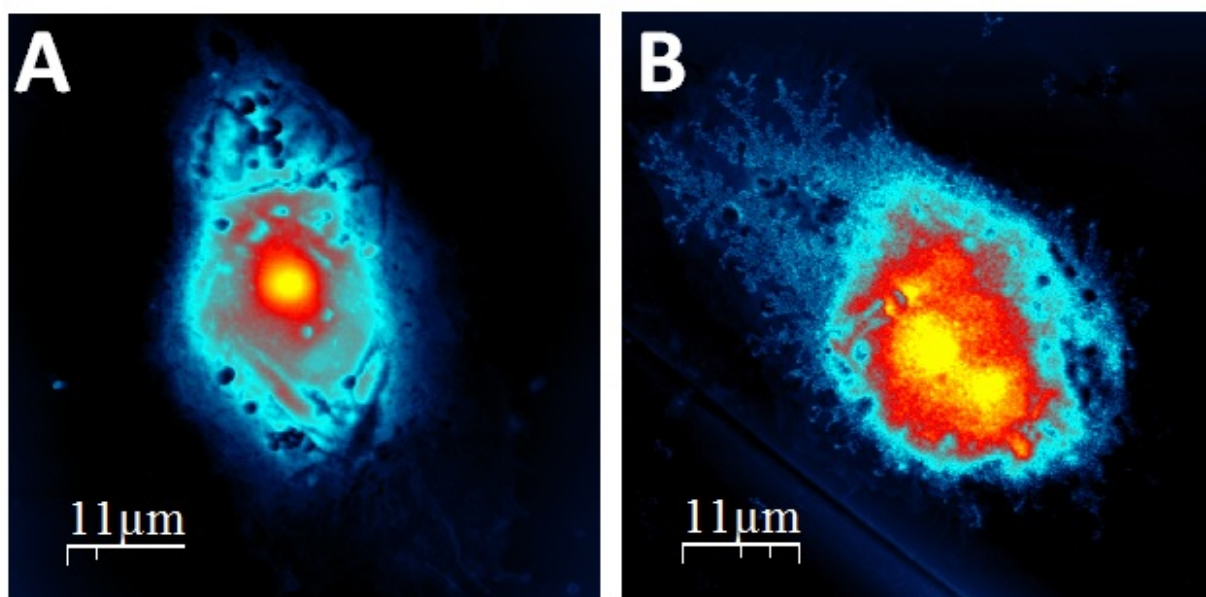


Figure 1 Top-view images of the topographical surface of control HeLa cells.

Atomic force microscopy top-view images of the topographical surface of control HeLa cells (A) or after 24 hr of incubation in vitro with a membrane-active and cytolytic peptide (B). The anticancer peptide irreversibly disrupts the cell membrane integrity and releases the intracellular components (**Figure 1**) [1-3].

References

1. Caetano BC, Joanitti GA, Silva LP (2015) In vitro cytotoxic activity of chitosan–bullfrog oil microemulsion against melanoma cells. *Nanobiotechnology IET* 9: 172-177.
2. Medeiros KA, Joanitti GA, Silva LP (2014) Chitosan nanoparticles for dermaseptin peptide delivery toward tumor cells in vitro *Anti-cancer drugs* 25: 323-331.
3. Bemquerer MP, Macedo JK, Ribeiro AC, Carvalho AC, Silva DO, et al. (2012) Partial characterization of a novel amphibian hemoglobin as a model for graduate student investigation on peptide chemistry, mass spectrometry, and atomic force microscopy. *Biochemistry and Molecular Biology Education* 40: 121-129.