

Low-dose Metronomic Capecitabine (Xeloda) for Treatment of Metastatic Gastrointestinal Cancer: A Clinical Study

Dennis Genfors and Maria Albertsson

Division of Oncology, Department of Clinical and Experimental Medicine, Faculty of Health Sciences, County Council of Östergötland, University of Linköping, 581 85 Linköping, Sweden

Abstract

Background: Metastatic gastrointestinal cancer (GI-cancer) is often a chronic disease where the treatment intention often is palliative. For such patients, it is important to offer treatments that can prevent tumor progression without reducing quality of life more than necessary. Metronomic chemotherapy involves continuous administration of cytostatic drugs at low doses without longer drug-free intervals. Capecitabine (Xeloda) is a prodrug, given in a tablet formulation, that is selectively converted to 5-Fluorouracil at the tumor sites. In this study, we aimed to explore the efficacy and tolerability of metronomic Xeloda.

Methods: Patients (n = 87) diagnosed with a primary metastatic or recurrent disease were included and retrospectively analyzed. Clinical data were obtained from patient journals. All patients had been treated with metronomic Xeloda (500 mg × 2). Primary endpoints were to investigate the two-year overall survival (OS) and the best response. Best response was evaluated by radiological and clinical examination. Standard RECIST criteria were used. Survival analysis was performed using the Kaplan-Meier method.

Results: Regress stable disease and progress were seen in 13% (n = 11), 38% (n = 33) and 47% (n = 41) of the cases respectively. The two-year OS for the cohort was 56% and median OS was 26 months. The treatment was well tolerable and all reported side effects (n = 21) were of toxicity grade I or II.

Conclusions: Our data show that metronomic Xeloda may offer a therapeutic alternative for highly motivated patients in a good general condition when evidence-based regimens are not considered suitable or have failed.

Keywords: Gastrointestinal cancer, Metronomic chemotherapy, Capecitabine, Response, Quality of life

Corresponding author:

Dennis Genfors

✉ dennisgenfors@hotmail.com

Department of Clinical and Experimental Medicine, Faculty of Health Sciences, County Council of Östergötland, University of Linköping, 581 85 Linköping, Sweden.

Tel: +46709514069

Citation: Genfors D. Low-dose Metronomic Capecitabine (Xeloda) for Treatment of Metastatic Gastrointestinal Cancer: A Clinical Study. Arch Cancer Res. 2016, 4:1.

Received: January 27, 2016; **Accepted:** February 18, 2016; **Published:** February 22, 2016

Introduction

Gastrointestinal cancer

Worldwide, cancer is a major public health-care problem. Cancer accounts for 25% of all deaths, thus ranked second as leading cause of death, after ischemic heart disease. In 2010, there were 1.7 million deaths and 3.2 million new cases estimated each year in Europe and due to the aging of the European population, these numbers are expected to increase [1]. Gastrointestinal cancer (GI-cancer) is a common cancer form with colorectal cancer (CRC) as the second leading cause for cancer mortality [1]. Globally, CRC

is the third most common cancer disease among both males and females [2]. In addition, CRC stands for approximately 50% of all GI-cancer cases [3].

GI-cancer has for many years been considered a surgical disease. The possibility of curative surgical treatment mainly depends on the size of the tumor(s) and the presence of metastases. Unfortunately, it is common that the cancer already has spread to distant sites at the time of diagnosis. A metastatic disease is often a chronic nature and, therefore, rarely cured by surgery. When cure is not possible, chemotherapy can get the disease

manifestations to decrease or remain stable, thus may delay the time to disease progression, relieve symptoms and improve quality of life (QoL). Within the palliative setting, the main goals are to normalize life and prolong survival without reducing QoL more than necessary [4].

Unfortunately, conventional chemotherapy is associated with a lot of adverse effects that in many cases interfere with QoL. Vomiting, nausea, hair loss and neurotoxicity are some of the common side effects that the patients experience most bothersome [3]. Low-dose continuous anti-cancer treatment, also called metronomic chemotherapy is a relatively new concept of treating cancer, which is emerging as a promising alternative to the traditional regimens. This way of drug administration may offer important advantages such as higher tolerability and lower probability of drug resistance [5]. Metronomic chemotherapy has most of all been reported for breast cancer while its effect in GI-cancer is far less explored [6,7]. Although, a continuous low-dose approach is not commonly used for GI-cancer, there have been some earlier reports with promising results. Two case reports from 2007 and 2012 demonstrated successful treatments with metronomic capecitabine in patients with metastatic esophageal cancer and CRC [8,9]. In 2013, a pilot study which included 35 patients with metastatic GI-cancer was published [6]. In that study, the patients were treated with continuous low-dose capecitabine and for 6 of the 35 patients, palliation periods for more than two years were observed.

Metronomic chemotherapy

In order to improve cancer treatment, it is essential to explore new drug targets and treatment strategies. Within classical chemotherapy, drug resistance and toxic adverse events are two common issues [5]. According to the conventional chemotherapeutic regimens, cytostatic drugs are mainly used in combinations, given at doses near or even at the maximum tolerated dose (MTD). In order to allow the patient to recover from the treatment-related side effects, the drugs are administered in cycles (e.g. every third week) [10]. Initially, this traditional way of drug administration often results in tumor regression or stabilization, but in many cases, the response is short-lived. Nevertheless, conventional treatment is also associated with a reduced QoL [11]. In general, the concept of MTD-based chemotherapy is more effective for primary tumors than against metastasis. For a metastatic disease, conventional chemotherapy regardless if several cytotoxic drugs are combined, mostly only attain palliative effects [12].

In 2000, the term metronomic chemotherapy was coined by Hanahan et al. [11]. Metronomic chemotherapy refers to continuous drug administration of chemotherapeutic drugs (e.g. daily), at low doses, without longer drug-free intervals [13]. In contrast to conventional chemotherapy where rise and fall of the plasma concentration are the features, metronomic treatment leads to a sustained plasma concentration of the drug, thereby offering a lower probability for adverse events to occur [10]. Most clinical trials have demonstrated that high-grade toxicity is rare or even not found [14]. Moreover, a continuous low-dose approach may also be more cost-effective since it offers a higher preference for inexpensive oral drugs and fewer expenses caused by adverse effects [15].

A consideration regarding metronomic chemotherapy is that many important aspects of the treatment are unresolved or empirical. These include the choice of chemotherapeutic agent, the optimal dose, dosing interval and patient selection [7,16,17]. In clinical practice, metronomic chemotherapy is emerging as an attractive experimental treatment option for the elderly and fragile patients who may not be fit for conventional chemotherapy, but still are motivated for treatment [16]. Metronomic chemotherapy might also be suitable within the palliative setting when the goal is to prevent disease progression without reducing QoL to a higher extent [6].

Metronomic chemotherapy - mechanisms of action

Within classical chemotherapy, cytotoxic drugs have mainly been designed to act on the cancer cell itself [18]. The goal is to kill as many tumor cells as possible and thereby hopefully treat cancer [5]. Classic cytostatic drugs often act as mitotic inhibitors, alkylators, enzyme inhibitors or false metabolites in order to cause deoxyribonucleic acid (DNA) damage or inhibit mitosis [19]. In contrast to conventional chemotherapy, metronomic chemotherapy is believed to act by different mechanisms [14]. The aim of metronomic anti-cancer treatment is to reach tumor control by primary target tumor angiogenesis [5]. Angiogenesis is the process in which new blood vessels are formed. Over the past decades, tumor angiogenesis has been established to have a very important role in the control of tumor and metastatic growth [20]. The anti-angiogenic effect is thought to be mediated by killing the bone-marrow-derived endothelial progenitor cells or by either killing or inhibit the endothelial cells in the vasculature of the tumor [7,8,14]. *In vivo*, metronomic chemotherapy has also shown to increase the levels of thrombospondin-1, an endogenous inhibitor of angiogenesis [5]. Since the drugs are administered continuously without longer drug-free intervals, the endothelial cells do not get the chance to recover, and as a result, the anti-angiogenic effect remains sustained [14].

Besides the anti-angiogenic properties of low-dose continuous chemotherapy, additional mechanisms have been revealed. These include stimulation of the immune system and induction of tumor dormancy [7]. The immune system stimulation is believed to be mediated by inhibition of regulatory T-cells (Tregs) and activation of dendritic cells. Inhibition of Tregs lead to activation of tumor un-specific and tumor specific effector cells while activation of dendritic cells is thought to enhance the immune-stimulatory effect [14,21-23]. Tumor dormancy may be induced through three different methods. These include immune-surveillance, suppressing angiogenesis and by causing apoptosis of cancer cells [10]. It has also been shown that metronomic chemotherapy might improve the effect of targeting drugs such as the monoclonal antibody bevacizumab [8,14].

Capecitabine (Xeloda)

The efficacy of 5-Fluorouracil (5-FU) was discovered in the fifties. Since then, it has been a very important and commonly used drug for treatment of GI-cancer [6]. For treatment of colorectal cancer, 5-FU has been used for more than 40 years [24]. 5-FU is administered intravenously (I.V), which requires insertion of a tedious peripherally central catheter (PCC) [25]. New treatment

strategies have been developed in order to increase the anticancer activity, but there are still factors that limit its clinical use. These include drug resistance and controversies regarding the optimal administration of the drug [6,26].

The development of an oral fluoropyrimidine derivative named capecitabine (Xeloda) has opened up new possibilities regarding this question [6,27]. Xeloda is a prodrug, which is administered to the patient in a tablet formulation [28]. By using oral administration it is easier to maintain a desirable blood concentration of the drug and since placement of a PCC is not necessary, catheter-related complications are avoided [25]. After absorption from the gastrointestinal tract, capecitabine is enzymatically converted to 5-FU. The conversion to 5-FU occurs in several steps, where the enzyme responsible for the final step is called thymidine phosphorylase [29]. Since thymidine phosphorylase is located at much higher concentrations in tumor tissue than in normal tissues, the active form of the drug is mainly present at the tumor site [30]. In the tumor tissue, 5-FU is converted to fluorodeoxyuridine monophosphate and fluorouridine triphosphate. Both these metabolites cause cell injury through two mechanisms. These include incorporation into RNA as a false nucleotide and inhibition of the enzyme thymidylate synthase, which is responsible for the rate-limiting step in the thymidine synthesis [24]. Since thymidine is essential for DNA-synthesis, cellular death ensues. The incorporation of a false nucleotide into RNA leads to inhibition of DNA-synthesis followed by apoptosis [28].

Capecitabine has in preclinical xenograft models possessed activity in both 5-FU-resistant and 5-FU-sensitive cancers. Furthermore, low-dose continuous capecitabine has also shown to be safe and be of antitumoral benefit in hepatocellular carcinoma. In a clinical trial including 59 previously untreated patients with advanced hepatocellular carcinoma, metronomic Xeloda achieved an overall survival and a progression free-interval of 14 and 6 months respectively [31]. In a pilot study which included 35 patients with stage IV GI-cancer treated with metronomic capecitabine, both regression and stable diseases were observed [6]. In this study, the efficacy of metronomic Xeloda will be further explored in an extended patient material with metastatic GI-cancer.

Aims of the study

The aim of this study was to explore the efficacy of metronomic Xeloda in a patient material with metastatic GI-cancer. The patients included were for some reason not considered suitable for evidence-based medicine. Another goal was to investigate the safety and tolerability during treatment.

Materials and methods

Study design and patient material

In this study, 87 patients with stage IV GI-cancer were included. The patients were recruited from a city in Sweden and were diagnosed with a primary metastatic or recurrent disease between 2007 and 2015. The patients started treatment with low-dose Xeloda (500 mg x 2) during the period 2009-2015 and were retrospectively followed-up 2015. Many of the patients had been treated with classical chemotherapy before treatment

with metronomic Xeloda. Patients that were given metronomic Xeloda as the first line of treatment were those of high age (≥ 75) or with medical contraindications that were not considered fit for conventional chemotherapy. Other indications for treatment were experimental treatment or severe toxicity to prior standard chemotherapy. Experimental treatment was considered when all other evidence-based regimens already had been tested and the patient was given metronomic Xeloda as the third, fourth or fifth line of treatment.

Of the 87 patients, many were more than 70 years of age, ranging from 28 to 87 years. The patients were divided into two groups as shown in **Figure 1**: one group with lower GI-cancer ($n = 64$) and one group with upper GI-cancer ($n = 23$). The malignancies representing the lower GI-cancer were cancer of the colon ($n = 38$), rectum ($n = 23$), anus ($n = 1$) and pseudomyxoma peritonei ($n = 2$). The group with upper GI-cancer included cancer of the esophagus ($n = 5$), pancreas ($n = 7$), stomach ($n = 1$) and the hepatobiliary system ($n = 10$). **Figure 2** shows the number of patients for each of the malignancies that were included in this study.

Patients were followed-up every eight week by radiological evaluation and every fourth week by clinical examination, including laboratory results. In order to assess the best response, patients had to have been under treatment for at least two months. The best response of the treatment was defined as the best response measured from the start of the treatment until disease progression. The first radiological evaluation occurred approximately two months after initiation of treatment. Assessment of tumor response was performed according to standard RECIST criteria [32]. In general, the patients

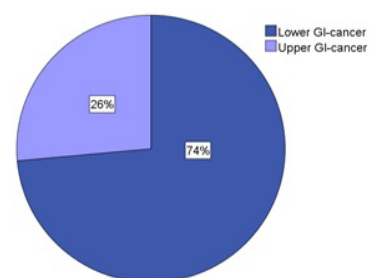


Figure 1 The percentages of patients in the two groups with upper ($n = 23$) and lower GI-cancer ($n = 64$).

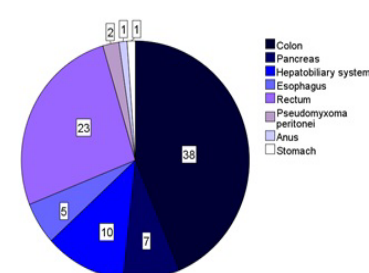


Figure 2 The number of patients for each of the malignancies included.

were radiologically re-evaluated every 6-8 week until disease progression. For a very small proportion of the patients, the best response of the treatment was not evaluable. The primary reason to this was that there was no x-ray result available.

Patient data

Clinical data were obtained from an electronic health care journal system called COSMIC and from paper journals. The data were transferred into a database, which was created in Microsoft Excel. Variables recorded were age at diagnosis, date of diagnosis, date of recurrence, site of primary tumor, side effects, QoL, line of treatment, date of death, cause of death (cancer-related or other), treatment duration, indication for treatment, best response of the treatment and last date of follow-up for survivals. Other cytostatic drugs that were used in combination with metronomic Xeloda were also noted. When a patient had more than one relapse and was radically operated, the treatment lines were counted from the last recurrence. The dates of diagnosis and relapse were based on the pathological-anatomical diagnosis (PAD). In cases where no PAD was available, the dates were based on the radiological and clinical picture of the patient. Side effects were classified according to National Cancer Institute Common Toxicity Criteria (NCI-CTC) version 3.0.

End points

The primary endpoints were to investigate the two-year overall survival (OS) for the cohort and the best response of the treatment, which was classified as stable disease, regress or progress of disease. OS was defined as the time from diagnosis to date of death (cancer-related or other causes) or date of last follow-up for patients who were alive at the time of analysis. The two-year OS was analysed within the cohort according to following parameters: age, gender, tumor position and treatment line. Other endpoints were treatment duration, treatment indications, QoL, adverse effects, but also to study whether the patients were treated with other drugs in combination with Xeloda. Quality of life and adverse effects were analyzed during treatment with Xeloda. The side effects included in this study were: diarrhea, skin rashes, neuropathies, convulsions, hand-foot syndrome, dry mucous membranes, leg swelling and redness. Treatment indications were classified as high age (>75), toxicity or experimental treatment, which was considered when all other conventional chemotherapeutic regimens already had been explored.

Ethics

With respect to the ethical aspects, personal data were made anonymous by giving each patient an ID-number. All patient data were safely stored throughout the whole study. The study was approved by the institutional review board of Linköping University Hospital.

Statistical analysis

For the patient material, a survival analysis was made using the Kaplan-Meier method. Analysis of OS within the cohort was tested for significance with the non-parametric log-rank test. P-values

less than 0.05 were deemed as statistically significant. Statistical analysis was performed using the software program, IBM SPSS Statistics for Windows, version 23.0. Tables and calculations were done in Microsoft Excel.

Results

Patient characteristics

Of the 87 included patients, 57% were men (n = 50) and 43% women (n = 37). The average age for the whole cohort was 69 years. Five patients were younger than 50 years and as much as 41 patients were older than 70 years. Lower GI-cancer was the most common cancer form among both males and females. For patients with upper GI-cancer, the average age was slightly higher (70 years) than for patients with lower GI-cancer (68 years). Twenty-one percent of the patients (n = 18) were treated with metronomic Xeloda because of their high age (≥ 75) and 26% of the patients (n = 23) due to toxicity of prior treatments. The most common indication for treatment was experimental treatment, which involved 53% of the cohort (n = 46). Sixty-nine percent of the patients (n = 60) had been treated with conventional chemotherapy before treatment with metronomic Xeloda. Moreover, 31% of the patients (n = 27) were given metronomic Xeloda as the first line of treatment. Demographic and treatment-related variables are summarized in **Table 1**.

As shown in **Figure 3**, treatment duration was longer for the group of patients with upper GI-cancer with a median duration of 177 and 420 days for females and males respectively. Within the group of patients who had lower GI-cancer, females had a longer median duration (307 days) than males (172 days). A few patients (n = 5) had an exceptional long treatment duration of more than 800 days. At the end of the study, 15% (n = 13) of the patients were still under treatment with metronomic Xeloda. Many patients were treated with other cytostatic drugs in combination with low-dose Xeloda. Forty-seven percent (n = 41) of the patients had combination therapy and 53% (n = 46) had monotherapy with

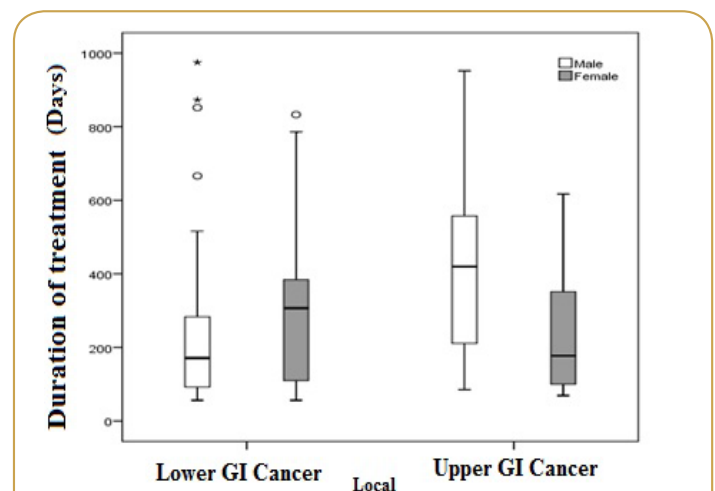


Figure 3 Duration of the treatment for men and women in the two groups. In the group with upper GI-cancer (n = 23), males (n = 12) and females (n = 11) had a median duration of 420 and 177 days respectively. For lower GI-cancer (n = 64), the corresponding data for men (n = 38) and females (n = 26) were 172 and 307 days respectively.

metronomic Xeloda. The most frequent drug used in combination with Xeloda was Avastin (n = 32). Other drugs used were Vectibix (n = 7), Campto (n = 3), Erbitux (n = 2), Eloxatin (n = 2), Tamoxifen (n = 1), Tarceva (n = 1) and Sendoxan (n = 1). For some patients, more than one drug combination was used.

Best response

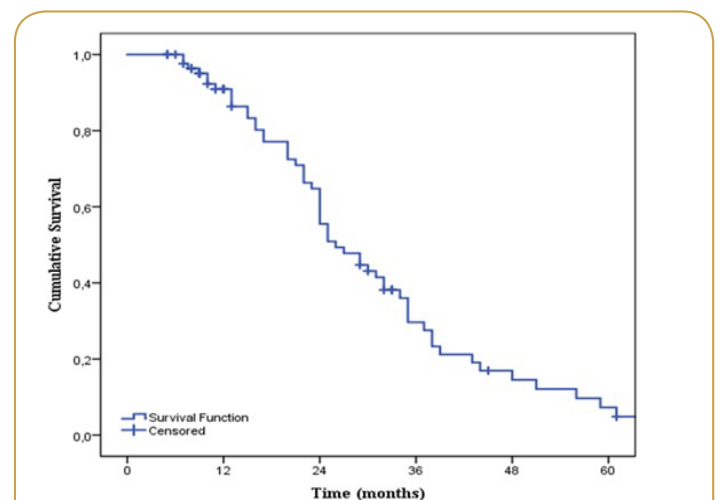
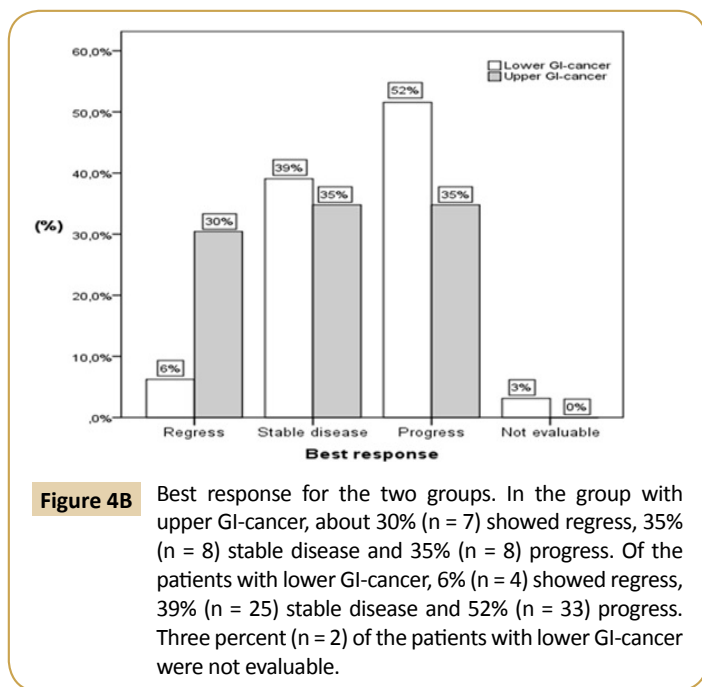
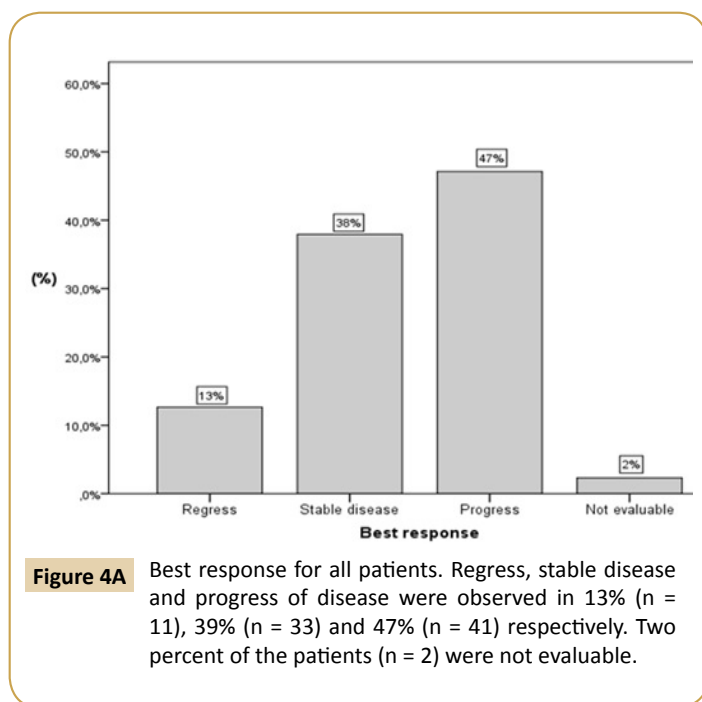
Overall, many patients responded to the treatment and had regress or stable disease (**Figure 4A**). Still, progressive disease was more common. Of the whole cohort, 13% (n = 11) showed regress, 38% (n = 33) stable disease and 47% (n = 41) had progress of disease. The best response in each of the two groups (upper and lower GI-cancer) is shown in **Figure 4B**. Regress of the disease

was observed in 30% (n = 7) of the patients with upper GI-cancer and in 6% (n = 4) of the patients with lower GI-cancer. Progressive disease was more common for lower GI-cancer. Within that group, 52% (n = 33) of the patients showed progress while 35% (n = 8) of the patients in the other group had progression as well. Stable disease was observed in 39% (n = 25) and 35% (n = 8) of the patients with lower and upper GI-cancer respectively. For two patients with lower GI-cancer, the best response was not evaluable.

Survival analysis

The patient cohort had a two-year overall survival (OS) of 56% (95% CI 44-68) (**Figure 5**). The median OS was 26 months (95% CI 20-32). At the time of analysis, 66% (n = 57) of the patients were dead and 34% (n = 30) were still alive. Ninety-one percent (n = 52) of the non-survivals had died from GI-cancer and 9% (n = 5) had died from other causes. For non-survivals older than 70 years and between 50 and 70 years old, 88% (n = 23) and 93% (n = 27) died from GI-cancer respectively. All non-survivals in the youngest patient cohort died from the disease. Males had a higher two-year OS (61%) than females (49%). However, no significant difference was found (p = 0.715) (**Figure 6**). Significant differences (p = 0.006) were found between the different age groups. As shown in **Figure 7**, young age was associated with a higher two-year OS of 75%, than for patients between 50-70 years (OS = 58%) or older (OS = 51%).

As shown in **Figure 8**, no significant difference (p = 0.933) was found between the groups with upper and lower GI-cancer. The two-year OS for upper and lower GI-cancer was 52% and 57% respectively. Patients treated with metronomic Xeloda as the fifth line of treatment fared better than others (OS = 80%) (**Figure 9**). However, no significant differences were found between the groups (p = 0.096). The two-year OS for patients receiving low-dose Xeloda as the first, second, third and fourth line was 47%, 63%, 44% and 57% respectively. Altogether, significant differences in OS were found for age, but not for gender, treatment line or tumor location.



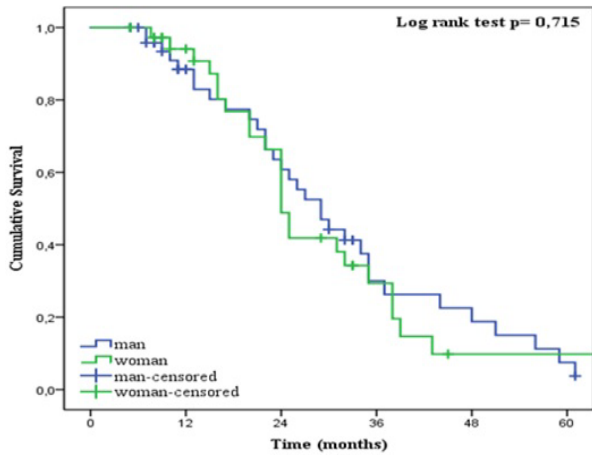


Figure 6 Two-year OS related to gender. two-year OS was 49% for women (n = 37) and 61% for men (n = 50). No significant difference was found (log-rank: p = 0.715).

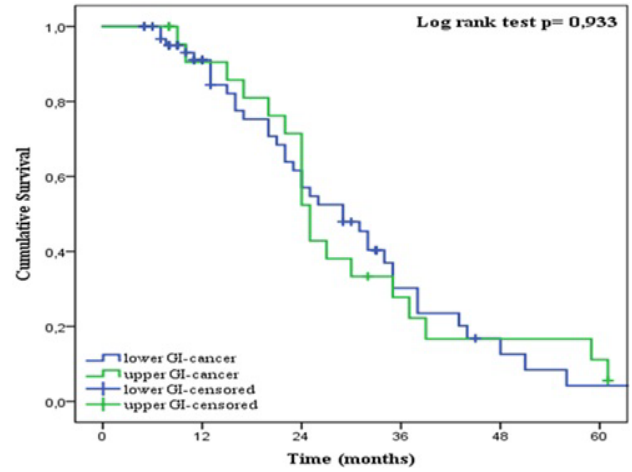


Figure 8 Two-year OS related to tumor location. Two-year OS was lower for patients with upper GI-cancer (n = 23, OS = 52%) than for patients with lower GI cancer (n = 64, OS = 57%). No significant difference was found (log-rank: p = 0.933).

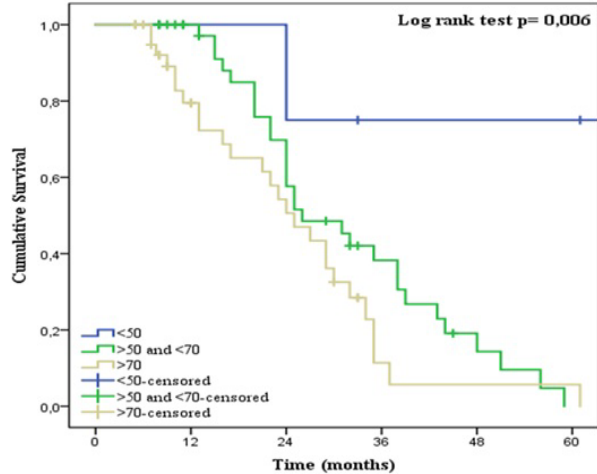


Figure 7 Two-year OS related to age. significant differences (log-rank: p = 0.006) were found between the age groups. Two-year OS was higher for the youngest patient cohort (n = 5, OS = 75%) than for patients between 50-70 years (n = 41, OS = 58%) or older (n = 41, OS = 51%).

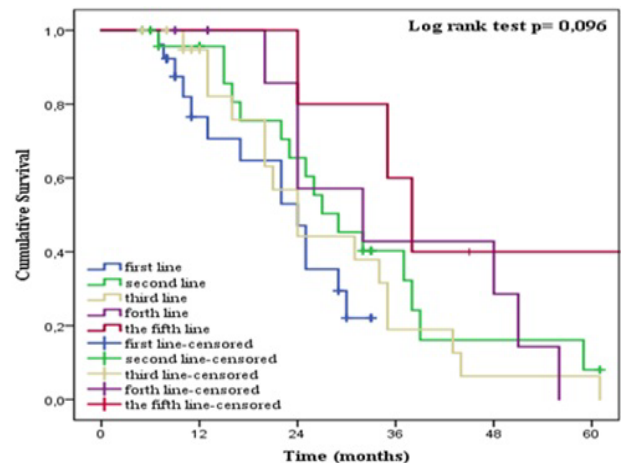


Figure 9 Two-year OS related to treatment line. Two-year OS was highest for patients receiving metronomic Xeloda as the fifth line of treatment (n = 5, OS = 80%). OS for patients treated with Xeloda as the 1st (n = 27), 2nd (n = 25), 3rd (n = 21) and 4th (n = 9) line of treatment were 47%, 63%, 44% and 57% respectively. No significant differences were found (log-rank: p = 0.096).

Safety and quality of life

In total, 76% (n = 66) of the patients reported a good QoL with no bothersome side effects during treatment with metronomic Xeloda. Twenty-six percent (n = 12) of the patients with monotherapy and 22% (n = 9) of the patients with combination therapy experienced adverse effects, which to some extent had an impact on their QoL. The safety profile of metronomic Xeloda is detailed in **Table 2**. The most common adverse effects were diarrhea (n = 6) and hand-foot syndrome (n = 5). These were generally mild and treated according to conventional routines, but no dose adjustments were needed. Other adverse effects included in this study were skin rashes (n = 3), leg redness and swelling (n = 3), dry mucosal membranes (n = 2), abdominal pain (n = 1) and convulsions (n = 1). No high-grade toxicity was reported and all side effects (n = 21) were of grade I or II. There

were no treatment-related deaths. In the youngest patient cohort, 60% (n = 3) experienced treatment-related side effects. The corresponding data for patients between 50 and 70 years and older than 70 years were 22% (n = 9) and 22% (n = 9) respectively. Overall, the treatment was well tolerable with few serious adverse events. Data related to side effects are summarized in **Table 3**.

Discussion

GI-cancer is a common cancer form where the primary curative treatment is surgery. Unfortunately, many patients already have a metastatic disease at the time of diagnosis, thus limiting the possibility for tumor resection. In some cases, neoadjuvant

Table 1 Demographic and treatment-related variables for all patients (n= 87).

| | Lower GI-cancer (n=64) | Upper GI-cancer (n=23) | Total (n=87) |
|---|---------------------------|---------------------------|-----------------|
| Gender, No (%) | | | |
| Males | 38 (59) | 12 (52) | 50 (57) |
| Females | 26 (41) | 11 (48) | 37 (43) |
| Age At Diagnosis. Average (SD*), Years | 68,5 (12) | 70,4 (7) | 69 (11) |
| Age At Diagnosis, Years, No (%) | | | |
| (50 ≤) | 3 (5) | 2 (9) | 5 (6) |
| (50 ≥, ≤70) | 29 (45) | 12 (52) | 41 (47) |
| (≤70) | 32 (50) | 9 (39) | 41 (47) |
| Indication for treatment, No (%) | | | |
| High age | 15 (23) | 3 (13) | 18 (21) |
| Toxicity | 18 (28) | 5 (22) | 23 (26) |
| Experimental Treatment | 31 (48) | 15 (65) | 46 (53) |
| Line of treatment, No (%) | | | |
| 1 st Line | 23 (36) | 4 (17) | 27 (31) |
| 2 nd Line | 18 (28) | 7 (30) | 25 (29) |
| 3 rd Line | 13 (20) | 8 (35) | 21 (24) |
| 4 th Line | 5 (8) | 4 (17) | 9 (10) |
| 5 th line | 5 (8) | 0 (0) | 5 (6) |

*Standard Deviation (SD)

Table 2 NCI grade I-II toxicities.

| Side Effects | N=87 | (%) |
|-----------------------|------|-----|
| Diarrhea | 6 | 7 |
| Hand-foot Syndrome | 5 | 6 |
| Leg swelling, redness | 3 | 3 |
| Dry mucous membranes | 2 | 2 |
| Skin rashes | 3 | 3 |
| Abdominal Pain | 1 | 1 |
| Convulsions | 1 | 1 |
| Neuropathies | 1 | 1 |

chemotherapy can reduce tumor size, thereby making surgery possible. For other patients with unresectable tumors that do not respond to chemotherapy, the intention of treatment often is palliative. The main features of palliative treatment with chemotherapy are to prevent tumor progression and control symptoms without reducing QoL more than necessary. For such purposes, a low-dose continuous treatment approach may offer important advantages over conventional chemotherapy. Phase II studies have demonstrated clinical benefits of metronomic chemotherapy, such as promising tumor control rates and excellent safety profiles [16,17]. In this study, we investigated the efficacy and tolerability of low-dose continuous Xeloda in an extended

Table 3 Side effects related to age, monotherapy and combination therapy with different cytostatic agents. More than one combination can have been used by the same patient.

| | No. of patients | No. of Side effects (Grade I – II) | (%) |
|--------------------------------|-----------------|---------------------------------------|-----|
| Monotherapy with xeloda | 46 | 12 | 26 |
| Combination Therapy | 41 | 9 | 22 |
| Xeloda/Avastin | 32 | 9 | 28 |
| Xeloda/Vectibix | 7 | 2 | 29 |
| Xeloda/Tamoxifen | 1 | 0 | 0 |
| Xeloda/Tarceva | 1 | 0 | 0 |
| Xeloda/Campto | 3 | 0 | 0 |
| Xeloda/Erbitux | 2 | 1 | 50 |
| Xeloda/Eloxatin | 2 | 0 | 0 |
| Xeloda/Sendoxan | 1 | 0 | 0 |
| Age (Years) | | | |
| <50 | 5 | 3 | 60 |
| 50-70 | 41 | 9 | 22 |
| >70 | 41 | 9 | 22 |

patient material with metastatic GI-cancer. The patients included were those who received high-grade toxicity to prior treatments or because of their high age or medical contraindications were not considered suitable for conventional chemotherapy. For a large proportion of the patients, all evidence-based treatment alternatives had already been tested.

Overall, many patients responded well to the treatment. Two months after initiation of treatment, 38% of the patients had an active but stable disease. Regress of the disease was also seen in 13% of the cases. Regress and stable diseases were seen in patients with both lower and upper GI-cancer. At the time of analysis, 30 patients were alive. Thirteen of those patients remained progression-free under treatment with metronomic Xeloda. These results are comparable with earlier results [6]. Miger et al. did a retrospective study, which included 35 patients with metastatic GI-cancer. Those patients were for the same reasons not considered suitable for evidence-based medicine and received metronomic Xeloda (500mg × 2). Two months after initiation of treatment, about 46% (upper GI-cancer) and 39% (lower GI-cancer) of those patients were considered to have a stable disease. Regress was seen in 31% of the patients with upper GI-cancer.

The whole patient cohort had a high median survival of 26 months and a two-year survival rate of 56%. Survival was related to age, but no significant differences were found for tumor location, gender or treatment lines. The high OS for the youngest patient cohort is impressive, but it is a small number of patients, selected by chemosensitive tumors where all other treatment schedules have failed. Still, the patients had a high performance status and were highly motivated for treatment. To our knowledge, there are no suitable randomized studies available to compare our survival data with. However, the CALBG study which included more than 1000 patients with metastatic CRC had a median survival of 30 months [33]. In that study, patients were treated with fluorouracil-based chemotherapy in combination with either bevacizumab or cetuximab as the first line of treatment.

One of the main concerns regarding conventional chemotherapy is that the drugs are used at doses near or at the MTD, which often results in toxic drug-related adverse events [5]. In this study, we also intended to investigate QoL and side effects during treatment with metronomic Xeloda. As much as 76% of the patients reported a good QoL during the treatment with Xeloda. For those patients, the treatment had a minimal or none impact on daily life. None of the reported adverse effects were of toxicity-grade III or IV. Most frequent side effects were hand-foot syndrome and diarrhea. According to other reports, such side effects are very common for capecitabine [34]. Our results show that low-dose capecitabine is well tolerated, hence the long treatment durations and few reported side effects. These results are consistent with most clinical trials, which have shown that metronomic chemotherapy is very tolerable and high-grade toxicity is rare [14].

Metronomic Xeloda has most of all been examined in breast cancer, but also for advanced CRC [14,35]. In other studies at our clinic, metronomic Xeloda has been investigated with remarkable results in patients with metastatic esophageal cancer and CRC [6,9,14]. In one of the reports, the patient was diagnosed with mucinous adenocarcinoma in the transverse colon with three liver metastases [14]. Since surgery was not considered possible and neoadjuvant chemotherapy with fluorouracil, folinic acid and oxaliplatin failed due to several infections, the patient was referred to palliative care. Treatment consisted of metronomic Xeloda (500 mg x 2) daily together with Avastin every other week. After four months, the tumors had regressed and the patient thereafter underwent radical surgery. Nine months after the operation, there were still no signs of recurrence. An interesting feature of this case is that mucinous adenocarcinomas have been shown to have a poorer response to both chemotherapy and chemoradiotherapy compared to non-mucinous adenocarcinomas [36,37].

Metronomic chemotherapy is believed to act by other mechanisms than classical chemotherapy. Within the classical chemotherapeutic regimens, the cytostatic drugs often are administered intravenously, at high doses near the MTD. The intention is to treat cancer by killing or inhibiting the rapidly dividing cancer cells. Traditional chemotherapeutic agents act as enzyme inhibitors, false metabolites, mitotic inhibitors or alkylators in order to cause DNA-damage or inhibit mitosis [19]. To our knowledge, the mechanisms of metronomic cancer treatment are not fully understood. At first, metronomic chemotherapy was mainly thought to achieve cancer control by primary targeting tumor angiogenesis, but recent studies have revealed that metronomic chemotherapy might be a multi-targeted therapy [5]. The anti-angiogenic properties of low-dose chemotherapy have been demonstrated *in vivo* and *in vitro* [11-

13]. These mechanisms include selective inhibition of migration and proliferation of endothelial cells, decreased levels of bone marrow-derived endothelial progenitor cells and increased levels of thrombospondin-1, an endogenous inhibitor of angiogenesis [8]. Studies have shown that metronomic chemotherapy may also stimulate the immune system and induce tumor dormancy [10,14]. The immune stimulatory effect is thought to be mediated by inhibition of T_{regs} and activation of dendritic cells. Metronomic chemotherapy can induce tumor dormancy by three different methods, which include immune-surveillance, suppression of angiogenesis and apoptosis of malignant cancer cells [5]. Since low-dose continuous chemotherapy offers a high preference for oral formulations and do not require hospital admission, it has shown to have a high degree of acceptance by both patients and physicians [35,38]. Oral formulations are cheaper, easier to administer and do not require hospital admission. From a cost perspective, metronomic treatment may therefore be more cost-effective alternative compared to conventional chemotherapy [15].

Finally, our results show that metronomic Xeloda seems be a promising alternative for motivated patients in a good general condition when evidence-based regimens are not considered suitable or have failed. However, patient data are collected retrospectively, which requires great caution when interpreting the results. More research is needed in order to better understand the potential promise that metronomic Xeloda might offer. Hopefully, this study may provide with inspiration and the basis for a future randomized prospective study within this research field.

Conclusion

Palliative treatment of metastatic GI-cancer is often limited to a few therapeutic options. Where the aims of the treatment are to achieve tumor control and a good QoL, a continuous low-dose approach with Xeloda, probably acting through different mechanisms, may offer a therapeutic alternative. Our results show that metronomic Xeloda is efficient and safe, measured in median survival, side effects, QoL and response. Both tumor regression and stable diseases were observed. Future randomized prospective studies are needed in order to fully understand the clinical benefits of metronomic treatment.

Author contribution

DG participated in the design of the study performed the statistical analysis and drafted the manuscript. MA designed the study and helped to draft the manuscript. All authors read and approved the final manuscript.

References

- Herszényi L, Tulassay Z (2010) Epidemiology of gastrointestinal and liver tumors. *Eur Rev Med Pharmacol Sci* 14: 249-258.
- Ferlay J, Soerjomataram I, Dikshit R, Eser S, Mathers C, et al. (2015) Cancer incidence and mortality worldwide: sources, methods and major patterns in GLOBOCAN 2012. *Int J Cancer* 136: E359-386.
- Ringborg U, Dalianis T, Henriksson R, *Onkologi* (2008) Liber Stockholm (2nd edn).
- Archer VR, Billingham LJ, Cullen MH (1999) Palliative chemotherapy: no longer a contradiction in terms. *Oncologist* 4: 470-477.
- Maiti R (2014) Metronomic chemotherapy. *J Pharmacol Pharmacother* 5: 186-192.
- Miger J, Holmqvist A, Sun XF, Albertsson M (2014) Low-dose capecitabine (Xeloda) for treatment for gastrointestinal cancer. *Med Oncol* 31: 870.
- Mross K, Steinbild S (2012) Metronomic anti-cancer therapy - an ongoing treatment option for advanced cancer patients. *Journal of Cancer Therapeutics And Research*.
- Pietrantonio F (2012) Hepatic colorectal cancer metastases showing a distinctive pattern of pathological response after metronomic capecitabine and bevacizumab. *Med Oncol* 29: 2838-2841.
- Carstens H, Albertsson M (2007) Successful treatment with low-dose capecitabine for disseminated esophageal adenocarcinoma. *Acta oncologica (Stockholm, Sweden)* 46: 866-868.
- Bahl A, Bakhshi S (2012) Metronomic chemotherapy in progressive pediatric malignancies: old drugs in new package. *Indian J Pediatr* 79: 1617-1622.
- Hanahan D, Bergers G, Bergsland E (2000) Less is more, regularly: metronomic dosing of cytotoxic drugs can target tumor angiogenesis in mice. *The Journal Of Clinical Investigation* 105: 1045-1047.
- Gasparini G (2001) Metronomic scheduling: the future of chemotherapy? *Lancet Oncol* 2: 733-740.
- Kerbel RS, Kamen BA (2004) The anti-angiogenic basis of metronomic chemotherapy. *Nat Rev Cancer* 4: 423-436.
- Vernmark K (2015) From palliative to curative treatment - stage IV mucinous adenocarcinoma, successfully treated with metronomic capecitabine in combination with Bevacizumab and surgery- a case report. *BMC Cancer* 15: 884.
- Bocci G (2005) Cyclophosphamide-methotrexate 'metronomic' chemotherapy for the palliative treatment of metastatic breast cancer. A comparative pharmaco-economic evaluation. *Annals of Oncology: official journal of the European Society for Medical Oncology (ESMO)* 16: 1243-1252.
- Lien K, Georgsdottir S, Sivanathan L, Chan K, Emmenegger U (2013) Low-dose metronomic chemotherapy: a systematic literature analysis. *Eur J Cancer* 49: 3387-3395.
- Pasquier E, Kavallaris M, André N (2010) Metronomic chemotherapy: new rationale for new directions. *Nat Rev Clin Oncol* 7: 455-465.
- Blansfield JA, Caragacianu D, Alexander HR 3rd, Tangrea MA, Morita SY, et al. (2008) Combining agents that target the tumor microenvironment improves the efficacy of anticancer therapy. *Clin Cancer Res* 14: 270-280.
- Malhotra V, Perry MC (2003) Classical chemotherapy: mechanisms, toxicities and the therapeutic window. *Cancer biology & therapy* 2: 2-4.
- Hanahan D, Weinberg RA (2000) The hallmarks of cancer. *Cell* 100: 57-70.
- Kono K (2006) CD4 (+) CD25 high regulatory T cells increase with tumor stage in patients with gastric and esophageal cancers. *Cancer immunology, Immunotherapy: CII* 55: 1064-1071.
- Tanaka H, Matsushima H, Mizumoto N, Takashima A (2009) Classification of chemotherapeutic agents based on their differential in vitro effects on dendritic cells. *Cancer Res* 69: 6978-6986.
- Kosmaczewska A, Ciszak L, Potoczek S, Frydecka I (2008) The significance of Treg cells in defective tumor immunity. *Arch Immunol Ther Exp (Warsz)* 56: 181-191.
- Wagstaff AJ, Ibbotson T, Goa KL (2003) Capecitabine: a review of its pharmacology and therapeutic efficacy in the management of advanced breast cancer. *Drugs* 63: 217-236.
- Shi H, Jiang J, Ji J, Shi M, Cai Q, et al. (2014) Anti-angiogenesis participates in antitumor effects of metronomic capecitabine on colon cancer. *Cancer Lett* 349: 128-135.
- Longley DB, Harkin DP, Johnston PG (2003) 5-fluorouracil: Mechanisms of action and clinical strategies. *Nat Rev Cancer* 3: 330-338.
- Hofheinz RD (2012) Chemoradiotherapy with capecitabine versus fluorouracil for locally advanced rectal cancer: a randomised, multicentre, non-inferiority, phase 3 trial. *The Lancet Oncology* 13: 579-588.
- Walko CM, Lindley C (2005) Capecitabine: a review. *Clin Ther* 27: 23-44.
- He S, Shen J, Hong L, Niu L, Niu D (2012) Capecitabine "metronomic" chemotherapy for palliative treatment of elderly patients with advanced gastric cancer after fluoropyrimidine-based chemotherapy. *Med Oncol* 29: 100-106.
- Miwa M (1998) Design of a novel oral fluoropyrimidine carbamate, capecitabine, which generates 5-fluorouracil selectively in tumours by enzymes concentrated in human liver and cancer tissue. *European journal of cancer (Oxford, England: 1990)* 34: 1274-1281.
- Brandi G, de Rosa F, Agostini V, di Girolamo S, Andreone P, et al. (2013) Metronomic capecitabine in advanced hepatocellular carcinoma patients: a phase II study. *Oncologist* 18: 1256-1257.
- Therasse P (2000) New guidelines to evaluate the response to treatment in solid tumors. European Organization for Research and Treatment of Cancer, National Cancer Institute of the United States, National Cancer Institute of Canada. *Journal of the National Cancer Institute* 92: 205-216.
- Venook AP (2014) CALGB/SWOG 80405: Phase III trial of irinotecan/5-FU/leucovorin (FOLFIRI) or oxaliplatin/5-FU/leucovorin (mFOLFOX6) with bevacizumab (BV) or cetuximab (CET) for patients (pts) with KRAS wild-type (wt) untreated metastatic adenocarcinoma of the colon or rectum (MCRC). *ASCO Meeting Abstracts* 32.
- Saif MW (2009) Targeting cancers in the gastrointestinal tract: role of capecitabine. *Onco Targets Ther* 2: 29-41.
- Fedele P (2012) Efficacy and safety of low-dose metronomic chemotherapy with capecitabine in heavily pretreated patients with metastatic breast cancer. *European journal of cancer (Oxford, England: 1990)* 48: 24-29.
- Shin US, Yu CS, Kim JH, Kim TW, Lim SB, et al. (2011) Mucinous rectal cancer: effectiveness of preoperative chemoradiotherapy and prognosis. *Ann Surg Oncol* 18: 2232-2239.

- 37 Lupinacci RM, Mello ES, Coelho FF, Kruger JA, Perini MV, et al. (2014) Prognostic implication of mucinous histology in resected colorectal cancer liver metastases. *Surgery* 155: 1062-1068.
- 38 Finek J, Holubec L Jr, Svoboda T, Sefrhansova L, Pavlikova I, et al. (2009) A phase II trial of oral vinorelbine and capecitabine in anthracycline pretreated patients with metastatic breast cancer. *Anticancer Res* 29: 667-670.